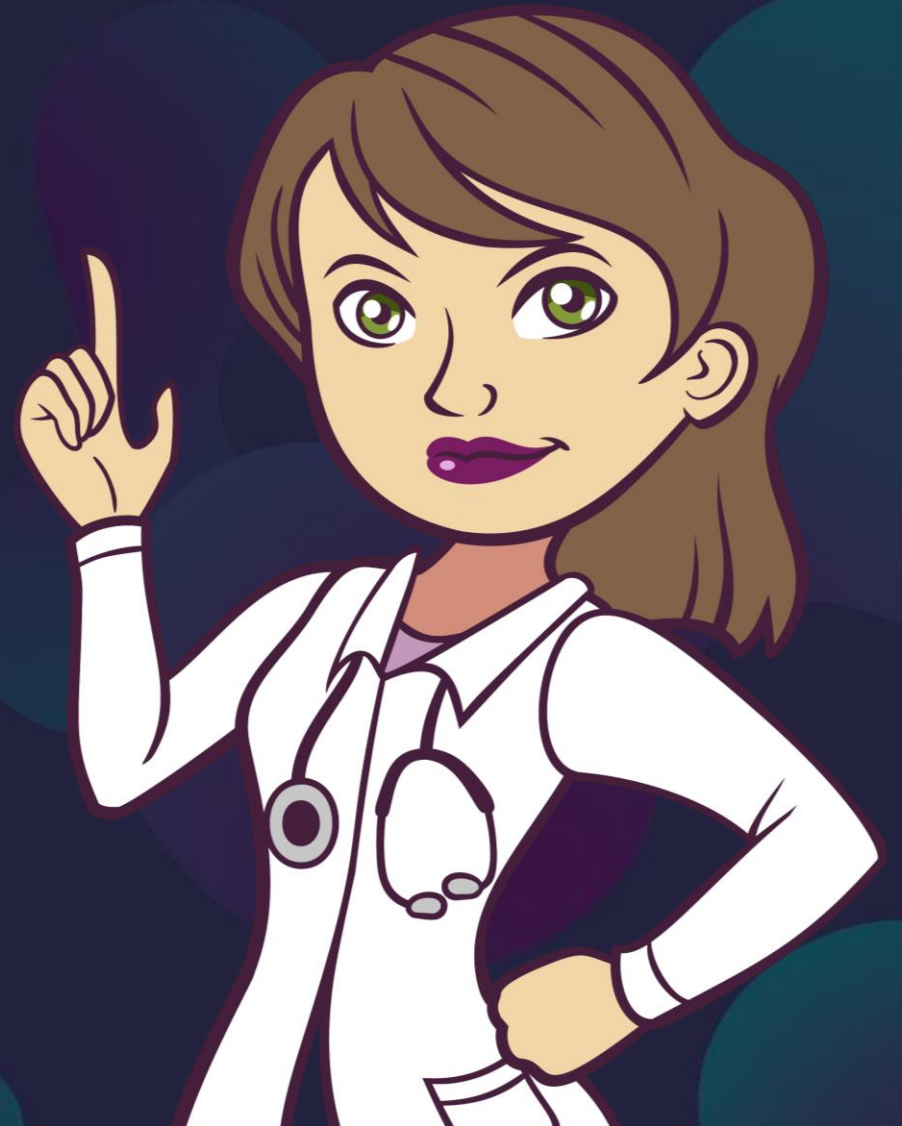


THE CELL INJURY

Nabila Abdulslam

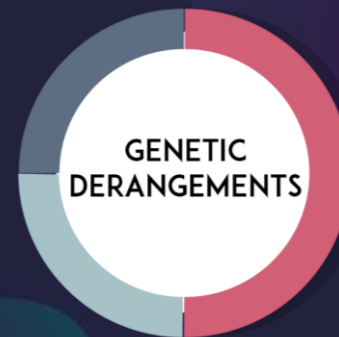
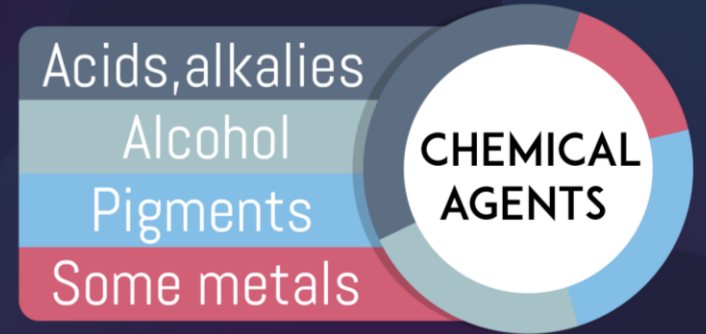
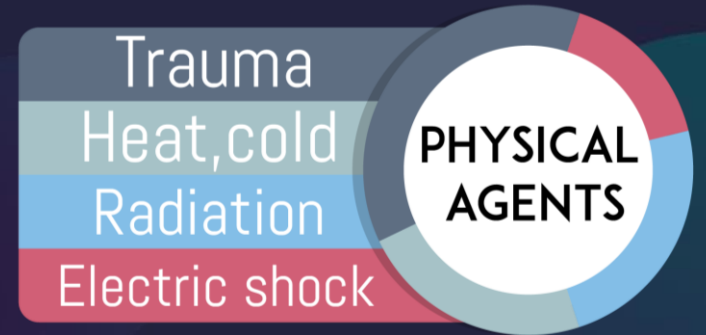
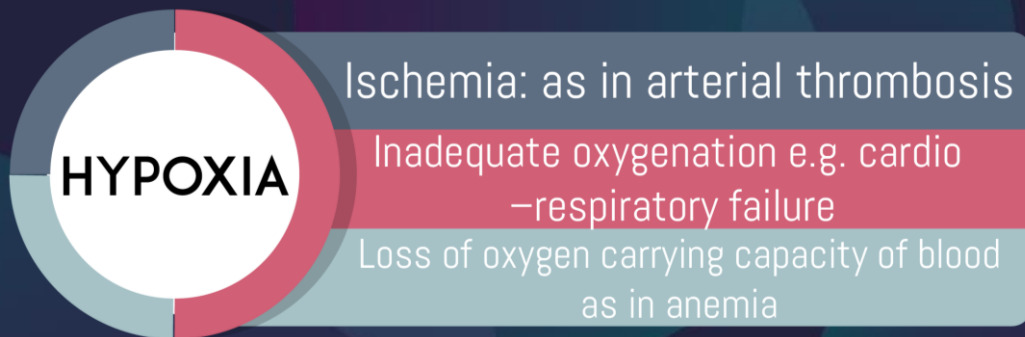
The second year-pharmD



THE CELL INJURY

if the cells fail to adapt under stress, they undergo certain changes called cell injury

THE CAUSES OF THE CELL INJURY



Types of cell injury

cell injury



Necrosis
Apoptosis

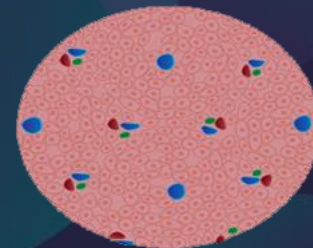


EXAPLES OF THE REVERSIBLE INJUR' (CELLULAR SWELLING):

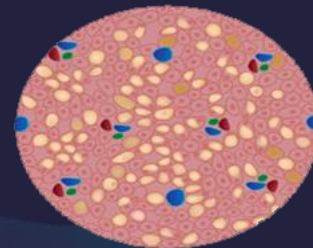
- 1 - Ballooning of liver cells in viral hepatitis
- 2 - Ballooning of B cells of islets pf Langerhans in cases of type 1 diabetes mellitus

(FATTY CHANGES)

Healthy liver



Fatty liver

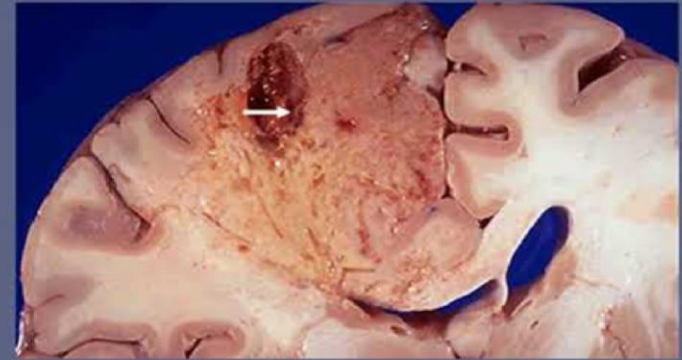


EXAMPLES OF THE IRREVERSIBLE CELL INJURY

(NECROSIS) :

- 1 - Liquefactive necrosis

Liquefactive necrosis



(APOPTOSIS)

- 1 - in physiological (normal) state such as :
Cells after achieving their purport .
- 2 - in pathological states such as :
 - Apoptosis of malignant tumor cells
 - In some cases of atrophy



THANK YOU

Nabila Abdulslam